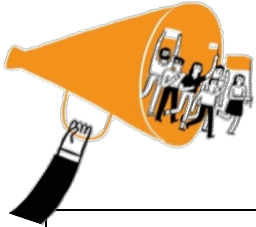
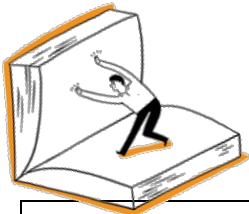


I NEED/ I BRING ACTIVITY

Find your superpowers in the upper left-hand corner of the tables below. Explore the strengths that we associate with those superpowers on the left column of each table, underneath the superpower. After review, highlight **one (1)** I NEED/I BRING statement that you feel resonates best with YOUR specific skillset for that superpower. Do this for your top two superpowers (reference your nametag for reminder). There will be space after the tables to capture these statements!



ADVOCATE	I Need...	I Bring...
Futuristic	Opportunities to talk about the foreseen future	Previews, predictions, forecasts
Communication	A sounding board, an audience	Attention to messages that must be heard
Command	Challenges and conflicts	Emotional clarity
Connectedness	To be part of something bigger than myself	An appreciation of the mystery and wonder of life and all creation



EDUCATOR	I Need...	I Bring...
Input	Space to store the resources I naturally acquire	Tangible tools that can facilitate growth and performance
Communication	A sounding board, an audience	Attention to messages that must be heard
Focus	A goal to establish priorities	Clarity through concentration and direction
Connectedness	To be part of something bigger than myself	An appreciation of the mystery and wonder of life and all creation

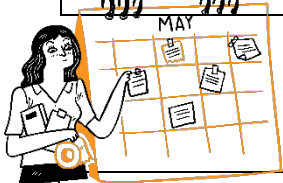
I NEED/ I BRING Activity Continued...



INNOVATOR	I Need...	I Bring...
Input	Space to store the resources I naturally acquire	Tangible tools that can facilitate growth and performance
Individualization	Individual expectations that are created to fit a person	An understanding of people that is valuable for placement
Arranger	A dynamic environment	Flexibility and interactivity
Connectedness	To be part of something bigger than myself	An appreciation of the mystery and wonder of life and all creation



MENTOR	I Need...	I Bring...
Maximizer	Quality to be valued as much as quantity	A quality orientation
Developer	Someone to invest in	A commitment (time and energy) to human growth
Relator	Time and opportunities for one-on-one interactions	Social depth and transparency
Connectedness	To be part of something bigger than myself	An appreciation of the mystery and wonder of life and all creation



PLANNER	I Need...	I Bring...
Maximizer	Quality to be valued as much as quantity	A quality orientation
Activator	Less discussion, more action	A catalytic sense of urgency
Command	Challenges and conflicts	Emotional clarity
Strategic	Freedom to make mid-course corrections	Creative anticipation, imagination, persistence

YOUR I NEED/I BRING STATEMENTS

Starting with **I NEED**, complete this sentence:

As a(n) _____ (SUPERPOWER) _____, I need _____. Do this for your top 2 superpowers.

AS A(N) _____, **I NEED** _____.

AS A(N) _____, **I NEED** _____.

Once you've identified your statements, ask yourself this: how does this show up, or what does this look like as a leader? Are you getting what you need to perform at your highest capabilities? If not, what would it look like to have this need met?

After asking yourself these questions, answer this final thought:

You get the best of me when

_____.

Now, go through and find your corresponding **I BRING** statements. Complete this sentence:

With _____ (SUPERPOWER) _____, I bring _____.

AS A(N) _____, **I BRING** _____.

AS A(N) _____, **I BRING** _____.

Again, do this for your top 2 superpowers. Once identified, ask yourself if you are fully utilizing that superpower? **I BRING** is all about the value you bring to others and environments. Are you able to bring that value to your current work? If not, what would it look like if you did? After asking yourself these questions, answer this final thought:

You can count on me to

_____.