



PROGRAMMING MATTERS

Learn more about Boston Scientific's advanced programming technology:
Image Guided Programming



A PICTURE IS WORTH MORE THAN A THOUSAND WORDS.

The programming of your Deep Brain Stimulation (DBS) device is as important as the device itself. With Image Guided Programming (IGP), your physician can see exactly where your leads are located and precisely where your stimulation needs to be delivered.

YOUR BRAIN. YOUR DBS THERAPY. PERSONALIZED JUST FOR YOU.



Typically, DBS programming is perfected over time. Balancing symptoms and side effects can take quite some time and is achieved over many programming sessions.

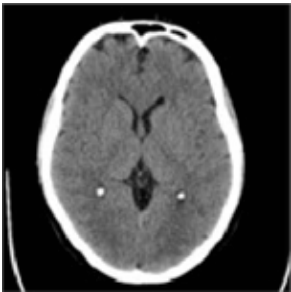


We have accepted the challenge to improve this process. Our solution: Image Guided Programming (IGP). IGP provides your physician the ability to see exactly where your leads are located and deliver stimulation to your precise location.

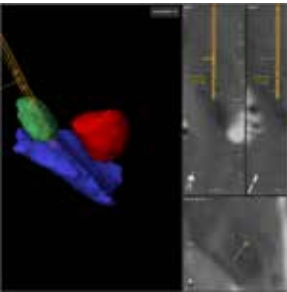
HOW DOES IMAGE GUIDED PROGRAMMING (IGP) WORK?

We often hear – *How do you know the leads are in the right place? Or – if my condition changes, can my therapy change too?* Image Guided Programming (IGP) answers both questions.

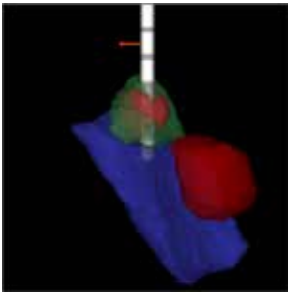
Here is how it works:



Images are collected during your DBS procedure.



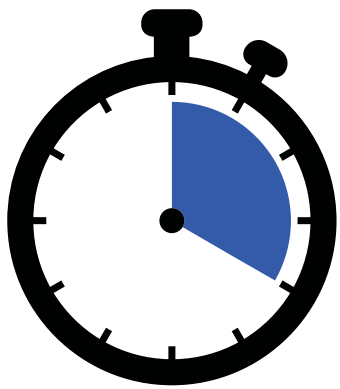
Collected images are evaluated to see the exact location of your leads.



The images are loaded into the programming software and therapy is programmed precisely – based on the location of your leads.



Stimulation can be adjusted to minimize side effects, at the initial programming and in the future.



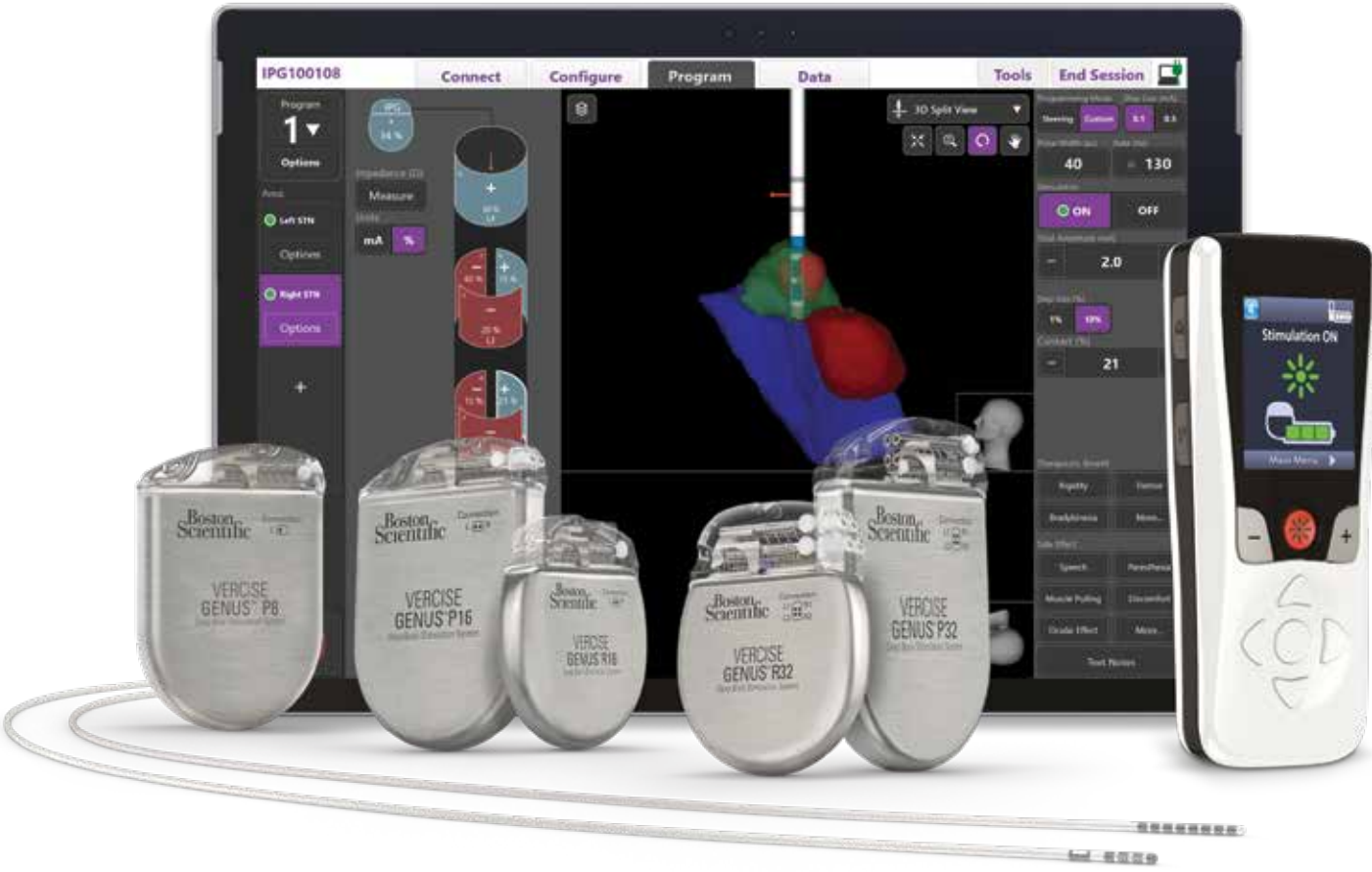
GIVING YOU BACK *YOUR* TIME.

When your device is programmed with IGP, you may spend less time in your programming sessions.* A recent study of 10 patients showed an initial programming time of 20 minutes; this is a 56% reduction in time typically spent in a session. The study concluded that IGP drastically reduces programming time without compromising symptom control and patient satisfaction.¹

*Results from clinical studies are not predictive of results in other studies. Results in other studies may vary.

FIND YOUR DBS SYSTEM.

Our entire portfolio of DBS systems include Image Guided Programming. From our long-lasting battery options to our thin, lightweight stimulators, your comfort and convenience was a top priority when creating our Vercise Genus™ DBS System. We invite you to explore the system that fits your needs at DBSandMe.com.



VISIT DBSANDME.COM to view videos of leading physicians discussing the benefits of IGP.



VISIT DBSANDME.COM to register for one of our weekly webinars featuring patients and physicians discussing DBS.

Talk to your neurologist about Boston Scientific's DBS System and visit DBSandMe.com to:

- Speak to a Patient Ambassador who's undergone DBS
- Sign up for a physician-led webinar
- View physician and patient testimonials

Speak with a DBS Care Specialist today:

Call 833-DBS-INFO or 833-327-4636.

1. Lange F, Steigerwald F, Malzacher T, Brandt GA, Odorfer TM, Roothans J, Reich MM, Fricke P, Volkmann J, Matthies C, Capetian PD. Reduced Programming Time and Strong Symptom Control Even in Chronic Course Through Imaging-Based DBS Programming. *Front Neurol*. 2021 Nov 8;12:785529. doi: 10.3389/fneur.2021.785529. PMID: 34819915; PMCID: PMC8606823. N =10.

Indication for Use: The Boston Scientific Vercise™ PC, Vercise Gevia™, Vercise Genus™ Deep Brain Stimulation Systems are indicated for use in:
-Bilateral stimulation of the subthalamic nucleus (STN) as an adjunctive therapy in reducing some of the symptoms of moderate to advanced levodopa responsive Parkinson's disease (PD) that are not adequately controlled with medication.
-Bilateral stimulation of the internal globus pallidus (GPi) as an adjunctive therapy in reducing some of the symptoms of advanced levodopa responsive Parkinson's disease (PD) that are not adequately controlled with medication.
-Unilateral thalamic stimulation of the ventral intermediate nucleus (VIM) is indicated for the suppression of tremor in the upper extremity. The system is intended for use in patients who are diagnosed with essential tremor or parkinsonian tremor not adequately controlled by medications and where the tremor constitutes a significant functional disability.

The Boston Scientific Vercise Deep Brain Stimulation System is indicated for use in:

-Bilateral stimulation of the subthalamic nucleus (STN) as an adjunctive therapy in reducing some of the symptoms of moderate to advanced levodopa responsive Parkinson's disease (PD) that are not adequately controlled with medication.

Contraindications: The Boston Scientific Deep Brain Stimulation Systems are not recommended for patients who will be exposed to the following procedures: Diathermy as either a treatment for a medical condition or as part of a surgical procedure, Electroconvulsive Therapy (ECT) and Transcranial Magnetic Stimulation (TMS). The safety of these therapies in patients implanted with the Vercise DBS System has not been established. Patients implanted with Boston Scientific Deep Brain Stimulation Systems without ImageReady™ MRI Technology should not be exposed to Magnetic Resonance Imaging (MRI). Patients implanted with the Vercise Gevia or Vercise Genus or Vercise Genus Mixed System with M8 Adapter or Vercise DBS Lead-only system (before Stimulator is implanted) with ImageReady MRI Technology are Full Body MR Conditional only when exposed to the MRI environment under the specific conditions defined in ImageReady MRI Guidelines for Boston Scientific Deep Brain Stimulation Systems. Boston Scientific Deep Brain Stimulation Systems are not recommended for patients who are unable to operate the system or are poor surgical candidates or who experience unsuccessful test stimulation.

Warnings: Unauthorized modification to the medical devices is prohibited. You should not be exposed to high stimulation levels. High level of stimulation may damage brain tissue. Patients implanted with the Vercise DBS System may be at risk for intracranial hemorrhages (bleeding in the brain) during DBS lead placement. Strong electromagnetic fields, such as power generators, security screeners or theft detection systems, can potentially turn the stimulator off, or cause unpredictable changes in stimulation. The system should not be charged while sleeping. If you notice new onset or worsening depression, changes in mood or behavior or impulse control, or have thoughts of suicide contact your physician or emergency services immediately. Chemical burns may result if the Vercise Stimulator housing is ruptured or pierced. The Deep Brain Stimulation System may interfere with the operation of implanted stimulation devices, such as cardiac pacemakers, implanted cardioverter defibrillators, or medication delivery pumps. Patients should operate motorized vehicles or potentially dangerous machinery with caution. It is unknown if the device may hurt an unborn baby. Your doctor may be able to provide additional information on the Boston Scientific Vercise DBS System. For complete indications for use, contraindications, warnings, precautions, and side effects see DBSandME.com or call 833-DBS-INFO or 833-327-4636.

Caution: U.S. Federal law restricts this device to sale by or on the order of a physician.

©2022 Copyright Boston Scientific Corporation or its affiliates. All rights reserved.

**Boston
Scientific**
Advancing science for life™

25155 Rye Canyon Loop
Valencia, CA 91355 USA

Copyright ©2022 by
Boston Scientific Corporation
or its affiliates. All rights reserved.

NM-1260011-AA