

Health Disparities & Parkinson's disease: Structural Racism and Oppression

Aswita Tan-McGrory, MBA, MSPH

Director, the Disparities Solutions Center

Administrative Director, the Mongan Institute

Massachusetts General Hospital



Follow us on Twitter: @MGHdisparities



Like us on Facebook: www.facebook.com/disparitiessolutionscenter



Ground Rules

- Value & respect the diverse perspectives and experiences in the room.
- Listen actively, with humility, empathy, & respect for the person sharing their experience.
- Speak from your own experience rather than generalizing or speaking for others. Use "I" statements instead of "they," "we," & "you."
- Avoid making assumptions about another person's identity. Do not expect others to speak on behalf of their race, ethnicity, culture, gender, sexual orientation, ability, or other groups they may identify with.
- Engage in dialogue, not debate. Dialogue involves open-ended discussion where people express & learn from one another's experiences & perspectives.



Ground Rules

- For people who don't usually talk about racism in diverse groups, these conversations can feel uncomfortable. Remember that the goal is not for everyone to feel comfortable; it is to gain deeper understanding through listening & respectful dialogue.
- Be open to learning from others, but take responsibility for your own learning as well. Don't expect people from marginalized groups to educate you on their experiences.
- Share the air. If you tend to dominate discussions, take a step back so others' voices can be heard. If you tend to be quiet, challenge yourself to speak up so others can learn from you.



What Are Disparities?

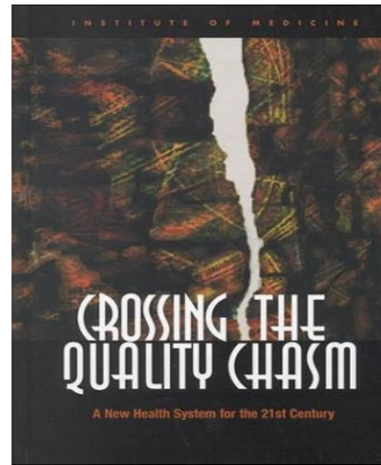
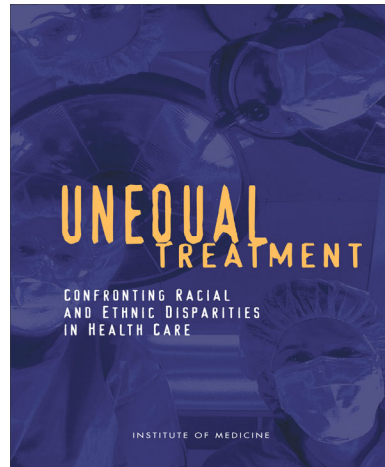
Gaps in quality of health and health care due to differences in race, ethnicity, socioeconomic status, sexual orientation, gender identity, and/or ability

Examples of Racial & Ethnic Disparities in Health Care:

- African Americans and Latinos receiving less pain medication than Whites for long bone fractures in the Emergency Department and for cancer pain on the floors
- African Americans with end-stage renal disease being referred less to the transplant list than Whites
- African Americans being referred less than Whites for cardiac catheterization and bypass grafting

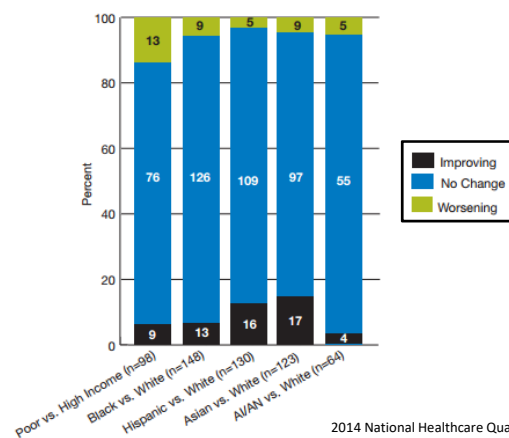


Racial & Ethnic Disparities in Health Care



National Healthcare Disparities Report

Change in Disparities: Number and percentage of quality measures for which disparities related to race, ethnicity, and income were improving, not changing, or worsening, through 2012



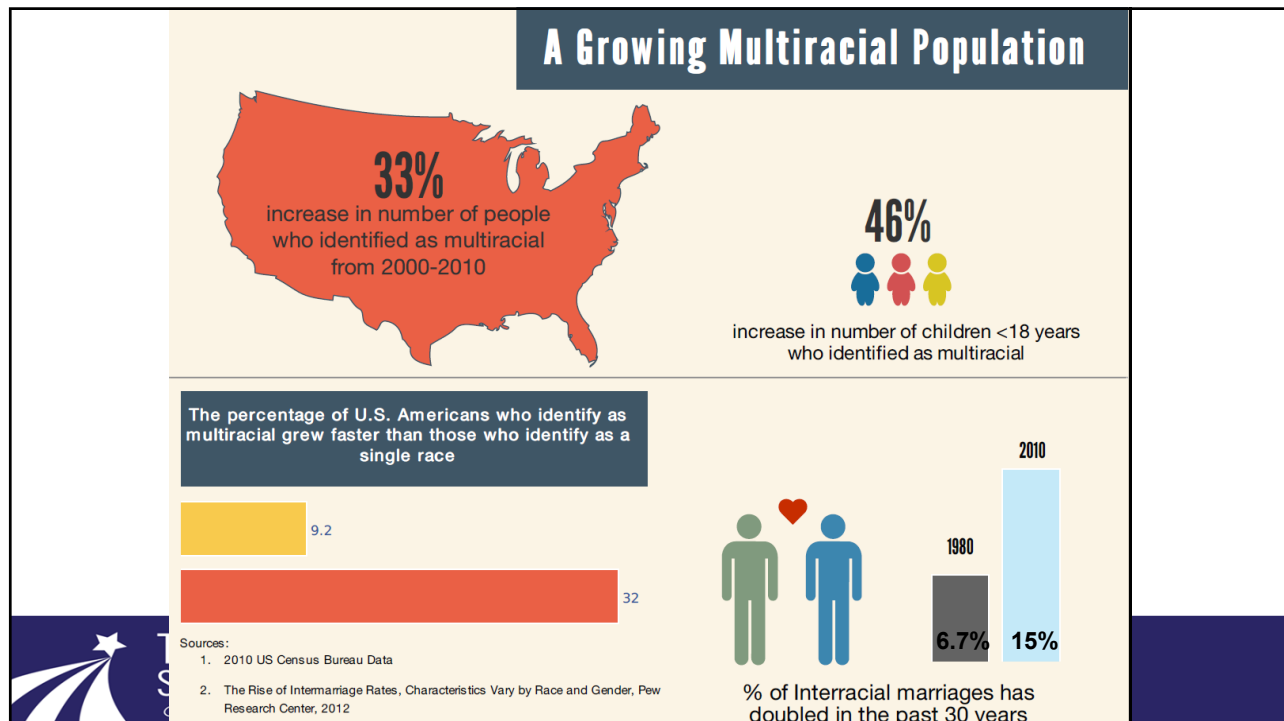
2014 National Healthcare Quality & Disparities Report. June 2015.
Agency for Healthcare Research and Quality, Rockville, MD.



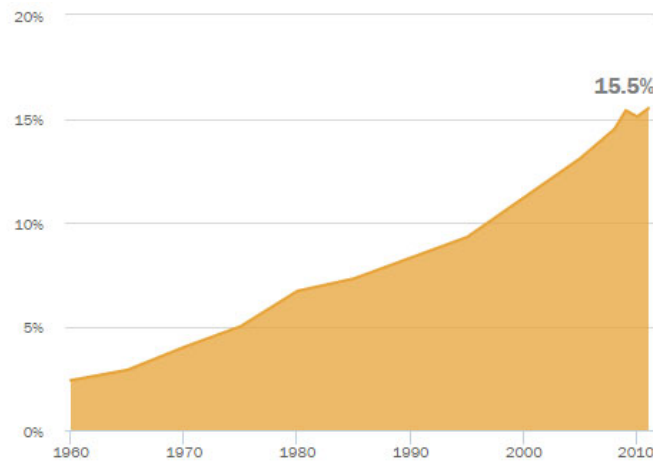
Office of Management & Budget (OMB) Categories

- Race:
 - ☐ American Indian or Alaska Native
 - ☐ Asian
 - ☐ Black or African American
 - ☐ Native Hawaiian or Other Pacific Islander
 - ☐ White
- Ethnicity:
 - ☐ Hispanic or Latino
 - ☐ Not Hispanic or Latino

*OMB is seeking public comments and changes to this 1997 Federal standard



Growth of Interracial Marriage

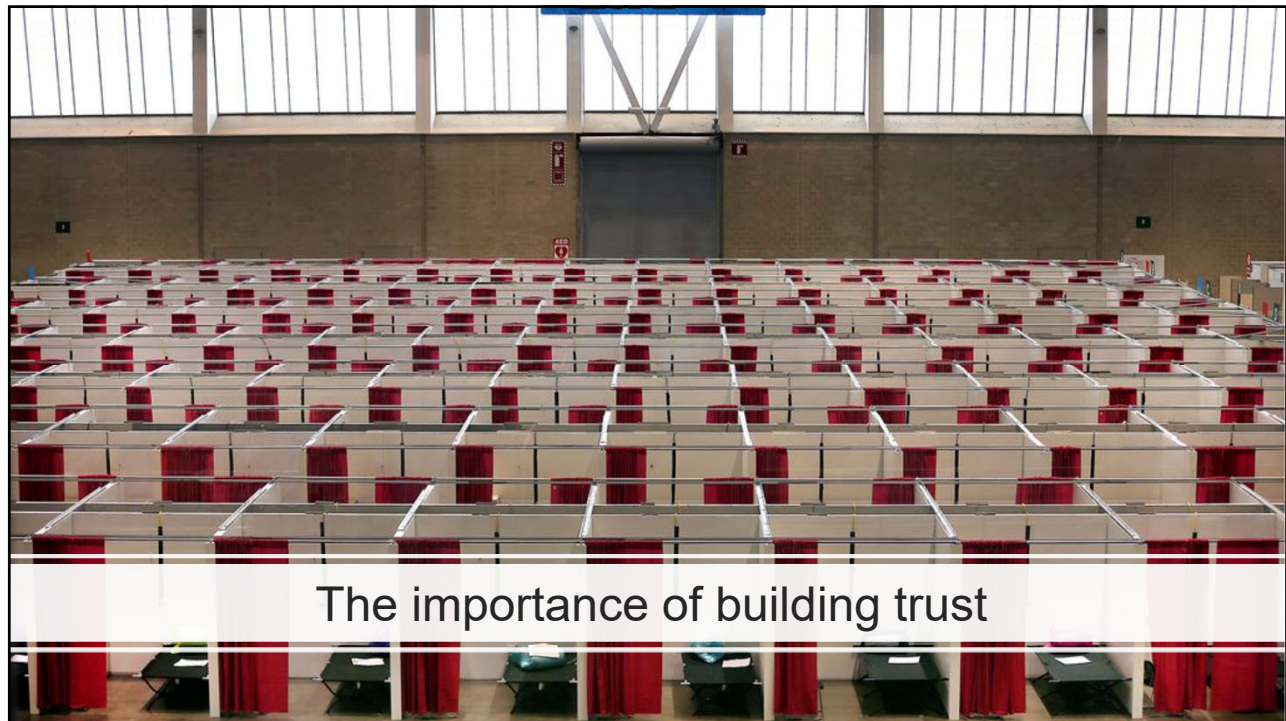
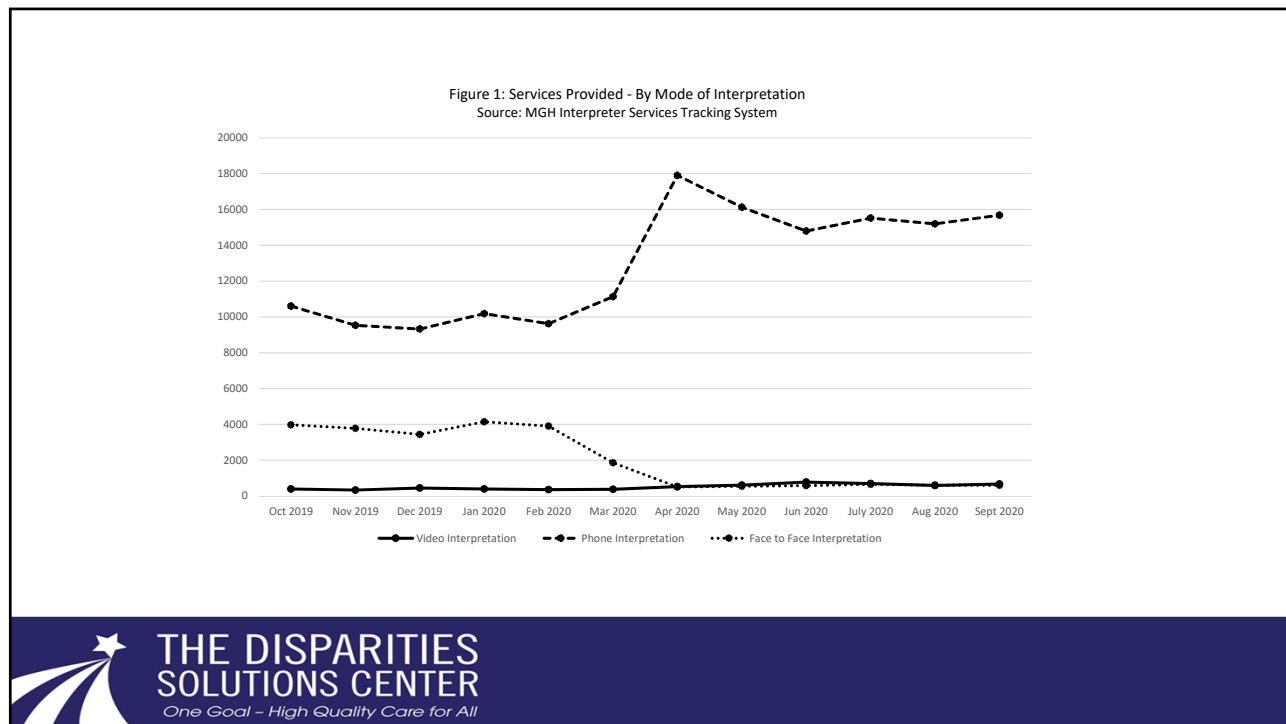


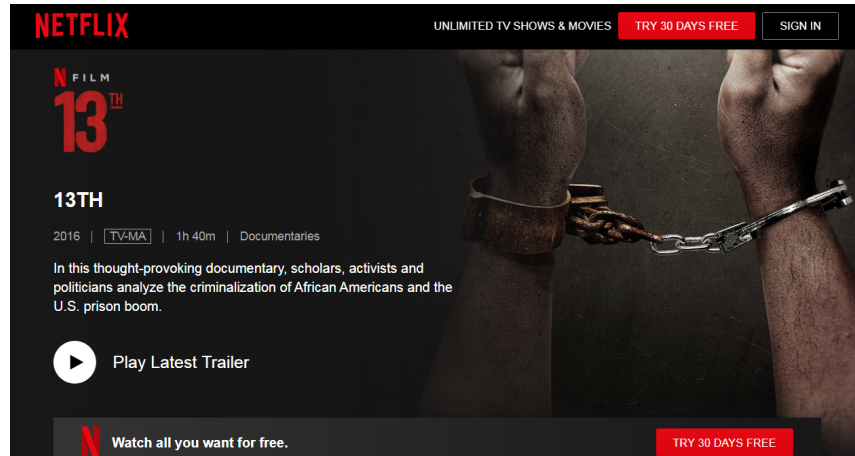
Patient Safety & Patients with Limited English Proficiency

- Adverse events affect patients with limited English Proficiency (LEP) **more frequently** and **severely** than English speaking patients
- Patients with LEP **are more likely to experience medical errors** due to communication problems
- Patients with LEP **are more likely to suffer physical harm** when errors occur (49.1% vs. 29.5%)*

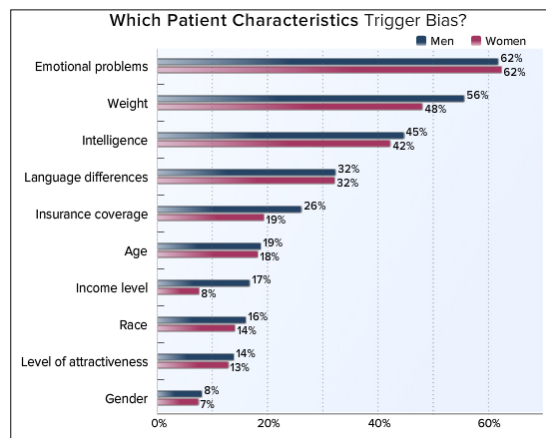
*Divi C, Koss RG, Schmaltz SP, Loeb JM. Language proficiency and adverse events in US hospitals: a pilot study. *Int J Qual Health Care*. Apr 2007;19(2):60-67.







Medscape Lifestyle Report 2016: Physician Bias



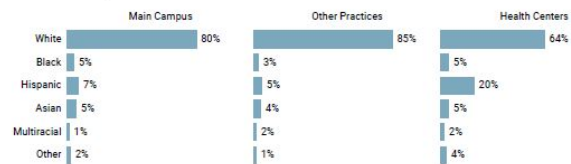
Source: Medscape Lifestyle Report 2016: Bias and Burnout. <https://www.medscape.com/slideshow/lifestyle-2016-overview-6007335#6>



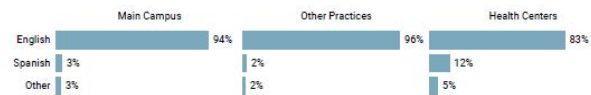
Demographics: Specialty Care Ambulatory Patients

Demographic Profile of Specialty Care Ambulatory Patients, 2019

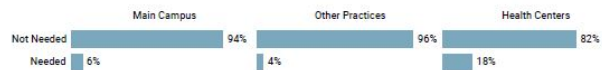
Race/Ethnicity



Preferred Language

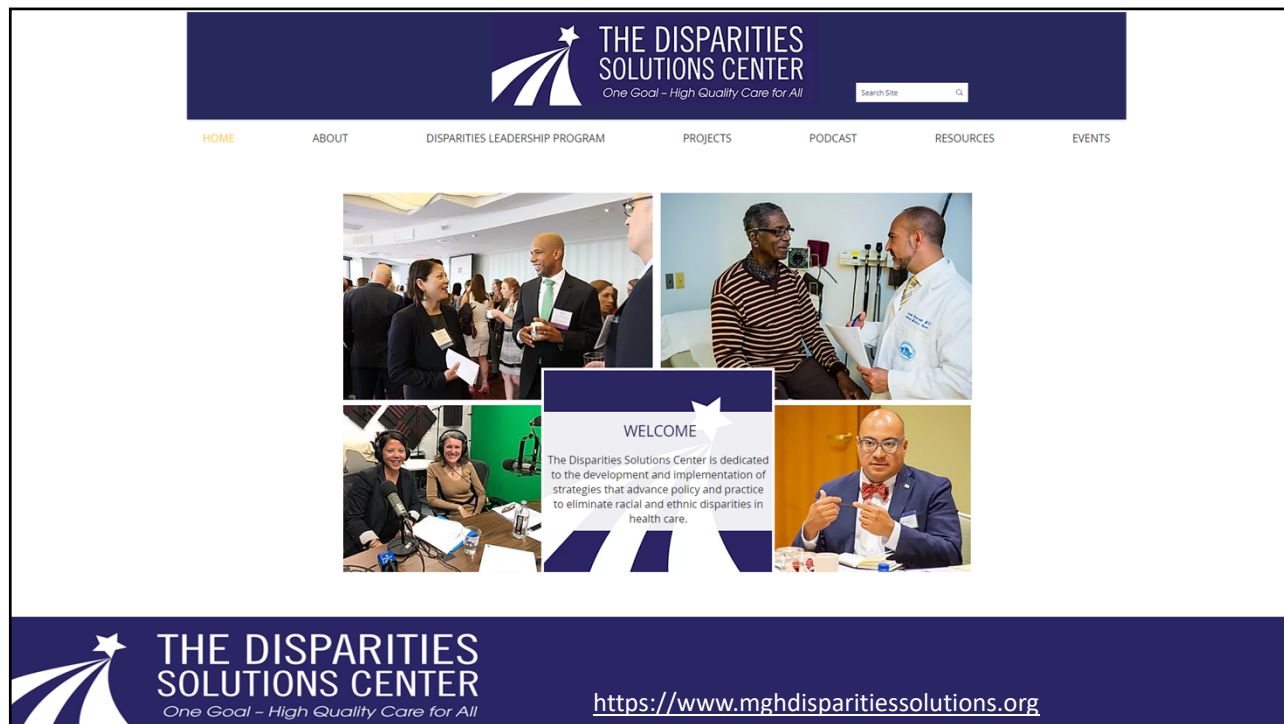


LEP (Interpreter Needed)



MGH COVID Corps Biomedical Research Internship Program





Thank You

Aswita Tan-McGrory, MBA, MSPH
 Director, the Disparities Solutions Center
 Administrative Director, the Mongan Institute
 Massachusetts General Hospital
atanmcgrory@mgh.harvard.edu



Follow us on Twitter: @atanmcgrory @MGHdisparities



Like us on Facebook: www.facebook.com/disparitiessolutionscenter

